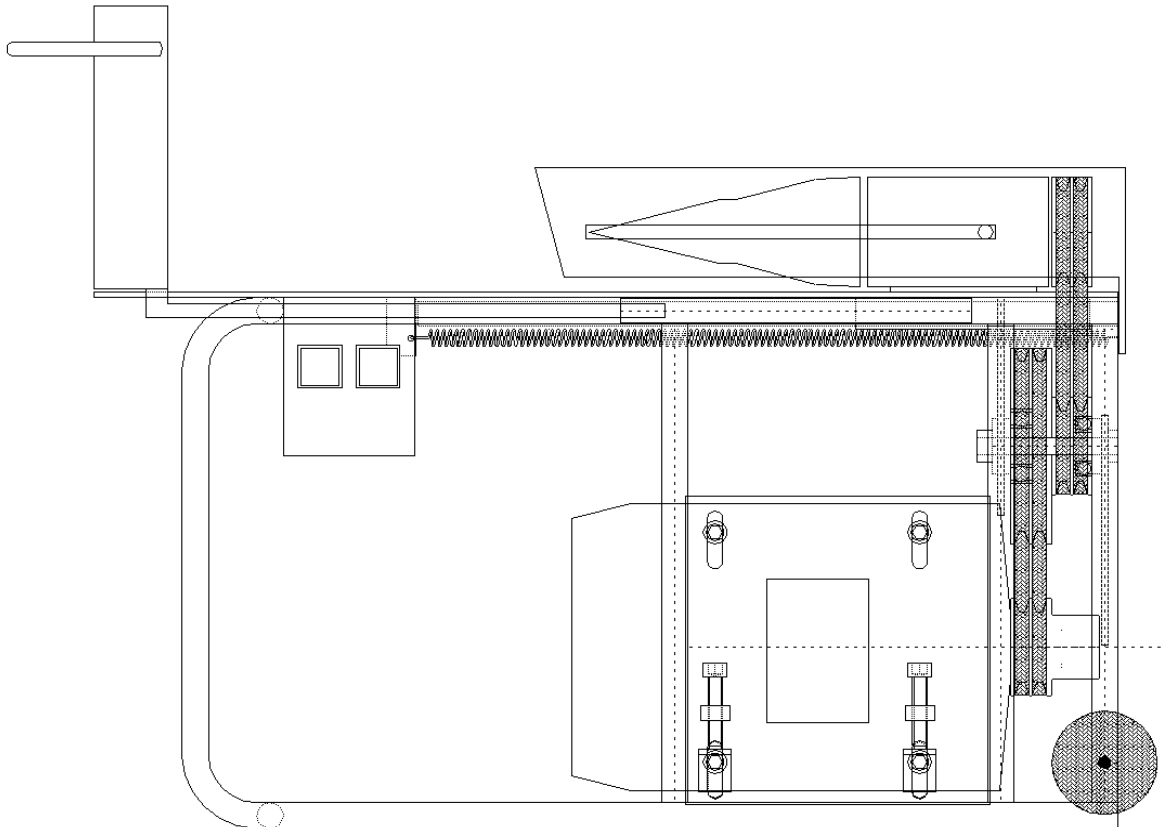


Original manual of operation

MANUAL OF OPERATION:



SCREW SPLITTER TMS – 2 3kW

Producer:

EN

TECHMET A.M.M.Z. Juzwa Sp.j.

ul. Mała 10

62-200 Gniezno

tel. / fax +48 61 428 24 18

biuro@techmet.pl / www.techmet.pl

First Edition January 2012

Table of contents:

1. BEFORE FIRST USE.....	5
2. IMPORTANT INSTRUCTIONS.....	5
3. IMPORTANT SAFETY INSTRUCTIONS	5
4. PRODUCT DESCRIPTION.....	9
4.1 Product view.....	9
4.2 Product description.....	10
5. MANUAL OF OPERATION.....	11
5.1. Preparing for operation - first run.....	11
5.2. Working with the splitter.....	11
5.3. Finishing operating the splitter.....	12
6. SPLITTER MAINTENANCE.....	12
6.1. V-belts adjustments.....	12
6.2. Drill exchange.....	13
6.4. Daily maintenance.....	14
7. LONG-TERM STORING.....	14
7.1 Storing the splitter.....	14
7.2 Preparing the splitter after storing.....	15
8. WHAT TO DO IN CASE OF PROBLEMS.....	15
8.1. When the drill gets blocked in the wood.....	15
8.2. Typical problems	16
9. SPECIFICATION.....	17
9.1. Spare parts.....	17
9.2. Electrical diagram.....	18
10. ENVIRONMENT PROTECTION, WASTE MANAGEMENT ACT.....	19
11. TERMS OF WARRANTY.....	19
12. NOTES:.....	20



DECLARATION OF CONFORMITY WE



TECHMET A.M.M.Z JUZWA Sp.j.

ul. Mała 10

62-200 GNIEZNO

acting as a producer

declares with full responsibility that the machine:

ŁUPARKA ŚRUBOWA

type / model: **TMS-2; 3kW**

year of production:.....

serial nr.:.....

stationary with a screw powered by an engine of 3kW powered by voltage 3~400V+PE
with a maximum diameter of the splitted log 300mm

which this declaration refers to, meets the requirements:

Ordinance of the Minister of Economy from 21st of October 2008 concerning essential requirements for machines
(Dz. U. [Official Journal of Laws] no. 199, position 1228)

and **European Union Directive 2006/42/WE** from 17th of Ma 2006 concerning machines (Official Journal of the
European Union L157 from 09.06.2006, pages 24-86)

and **Ordinance of the Minister of Economy** from 21st of August 2007 concerning essential requirements for
electrical equipment (Dz. U. [Official Journal of Laws] no. 155, position 1089)

i **European Union Directive 2006/95/WE** from 12th of December 2006 concerning electrical equipment (Official
Journal of the European Union L374 from 27.12.2006, pages 10-19).

The following standards have been applied to assess the conformity:

PN-EN 609-2+A1:2009

PN-EN ISO 12100:2011

PN-EN 60204 -1:2010

PN-EN ISO 3744:2010

PN-EN ISO 13857:2010

and the standards and regulations:

PN-ISO 3600:1998, PN-ISO 11684:1998

A person authorized to preparation of technical documentation:

Name and surname:, address:

The declaration shall be invalid, if the machine is modified or reconstructed

without the consent of the producer.

MANUAL OF OPERATION IS A KEY PART OF THE MACHINE!

.....
Place and date of edition

.....
Name, surname and signature of a person authorized

to issue a declaration

1. BEFORE FIRST USE

Read carefully and observe all the instructions presented below even if you think that you are familiar with the product. Find an appropriate place to keep the Manual of Operation to have it available at any time.

For your own convenience write down the full model number (shown on the identification label / stick of the product **P**) as well as the date of receiving the product with the receipt of purchase. Attach it to warranty and service information.

NOTE: Nominal ratings of the product (as shown in the identification label of the product **P**) are based on conducted stress tests. Power consumption can be reduced significantly during normal operation.

2. IMPORTANT INSTRUCTIONS



Manual of operation is an integral part of the machine! Apply for a new manual of operation to the producer if the manual of operation is destroyed!

We kindly request you neither to install nor use this splitter before you read the instruction carefully. Reading the instructions will help use the splitter in an optimal way.

3. IMPORTANT SAFETY INSTRUCTIONS

Essential safety measures must be observed while using electrical devices. The following measures must be included:



ALL THE INSTRUCTION MUST BE READ BEFORE STARTING USING THE PRODUCT.

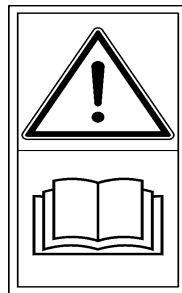
WARNING – following requirements must be met to reduce the risk of electric shock, personal injury or property damage:

1. Always power the splitter from the source of the same voltage, frequency and the nominal value as it is shown on identification label / stick placed on the product.
2. If the splitter is used by a disabled person, a direct supervision over his work is required.
Children, people under the influence of alcohol or intoxicants CANNOT use the splitter!

3. The splitter cannot be used when the power cord or plug are destroyed, when there is a breakdown or when the splitter has been dropped or damaged in any other way. In such case, the product must be returned to the place of its purchase where it can be controlled, repaired or replaced.
4. The splitter can never be plugged into a broken socket. The socket should be protected with Residual Current Device (RCD) with the electricity activation of 30 mA.
5. If an extension lead is necessary, it should be an extension lead made from a cord H07RN-FG1,5 finished with a plug and portable socket 16A 3N+PE
6. You must ensure if the device is correctly plugged in before turning the power. Never put the splitter down during the operation.
7. The splitter should never be placed in a vertical position to avoid damage.
8. When the splitter is not used or is to be cleaned, it should be turned off and it must be plugged out of the socket.
9. Use the switch placed on the splitter to turn of the appliance.
10. Never take the plug out of the socket while operating the splitter. Such operation can result in damage of the splitter or the motor.
11. Never put any objects on the splitter, do not cover the splitter with any material when the device is plugged into the source of power or when the device is working.
12. Do not put any objects on the product, do not let any objects block the splitter mechanism. Do not leave the splitter when it is working next to the materials that may screw into the mechanism.
13. Using spare parts or accessories neither recommended nor sold by the producer of this splitter may cause some danger to people or property. It may also result in injuries.
14. Keep the splitter operating area clean.
15. This product is intended for **normal use in the household**.
16. All repairs should only be carried out by a competent service department.
17. Make sure that all safety shields are installed before operating the splitter.

PICTOGRAMS INDICATIONS:

- Read the manual of operations before operating the splitter.



- Use safety gloves while operating the splitter.

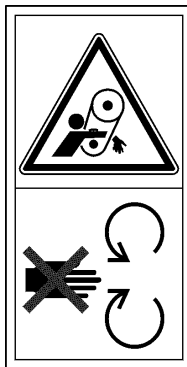


- Protect your eyes.

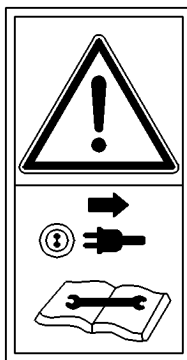
- Attention! Rapidly rotating elements can lead to serious injuries. Handle carefully.
- Attention! Live device.
- Attention! Hot surface.



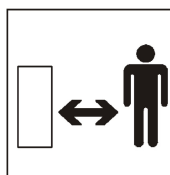
- Do not remove safety shields when the motor is working.



- Turn off the motor, unplug from the socket before and maintenance work, before unblocking a blocked piece of wood or before storing the splitter.



- Keep a safe distance from other people while working with a machine



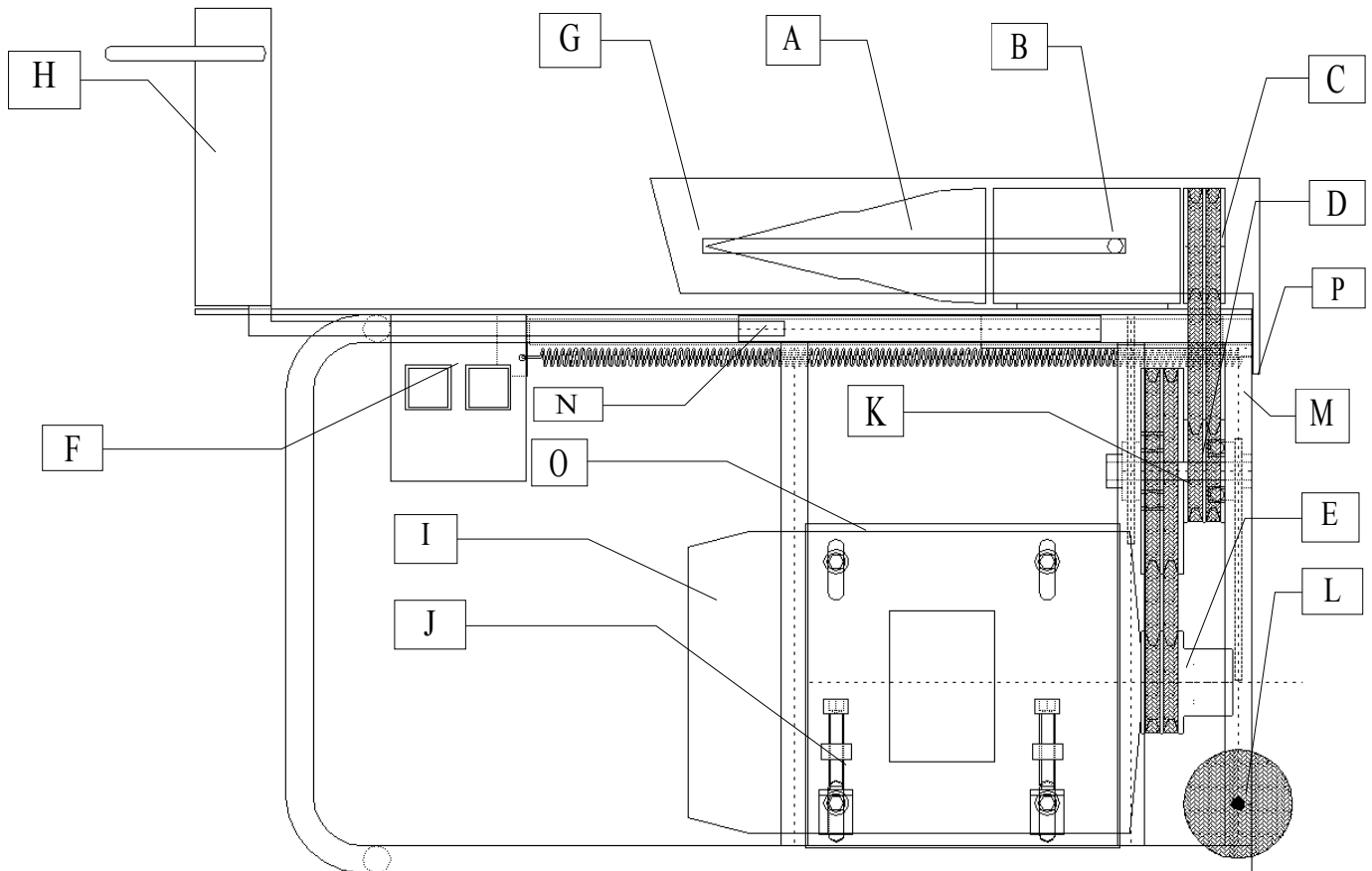
**READ CAREFULLY THE INSTRUCTION AND KEEP IT**

In case the manual of operation and pictograms get destroyed, apply at the producer for new ones

4. PRODUCT DESCRIPTION

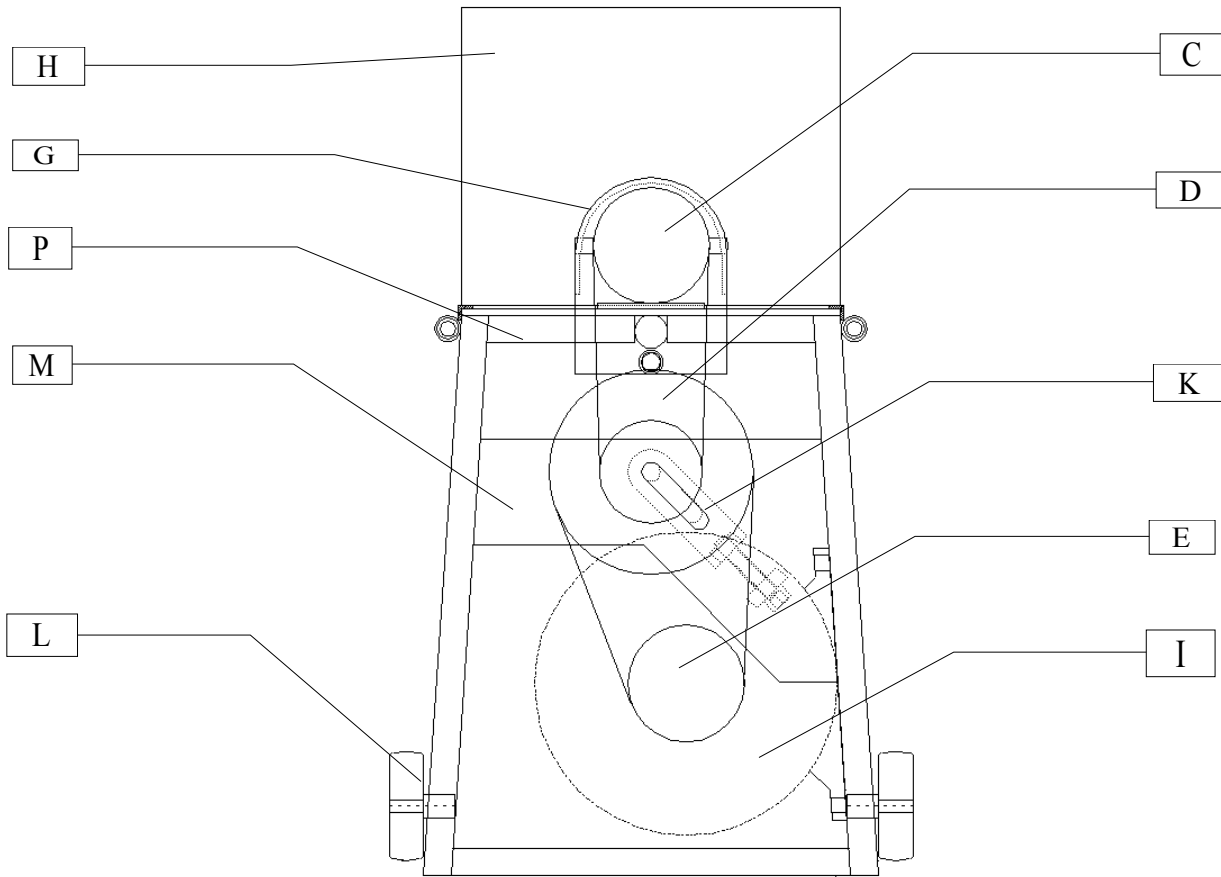
4.1 Product view

Side view:

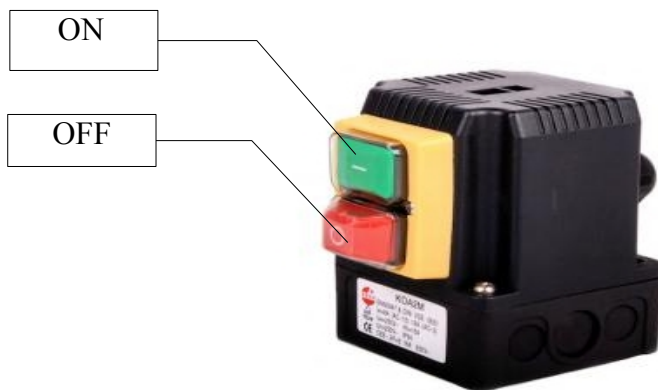


- | | | | |
|--------------------|---------------------|-------------------------|------------------|
| A: Drill | F: Switch | K: Tensioner | P: nominal board |
| B: Hub | G: Drill protection | L: Transportation rings | |
| C: Upper pulley | H: Wood pusher | M: Pulley protection | |
| D: Indirect pulley | I: Motor | N: Protection spring | |
| E: Bottom pulley | J: Motor tensioner | O: Motor plate | |
- Back view:

Back view:



Switch F:



4.2 Product description

Screw splitter TMS – 2 3 kW is a product intended to split wet logs in **vertical** position in the households according to the recommendations presented in the manual of operations. **The use of the splitter for any other purpose that stated herein cause danger and voids the warranty.**

5. MANUAL OF OPERATION

5.1. Preparing for operation - first run.

- Place the splitter in a safe place on a flat solid surface
- Check whether the splitter has all safety shields installed
- Check whether the splitter has no visible damage
- Check the tension of V-belts - if necessary make some adjustments (see point about maintenance)
- An access to the power socket 3~400V + PEN 16A is required to work with the splitter.
- Insert the plug into the socket, making sure that the connection is correct and reliable
- Turn on the splitter by pressing a green button on the switch **F**
- Make sure that the drill rotates in the selected direction of rotation, have the splitter repaired by a qualified electrician in case of incorrect direction of drill rotation
- Make sure whether the splitter's switch works by pressing a red button on the switch **F**
- You are ready to work with the splitter

5.2. Working with the splitter.

- **PUT ON PROTECTIVE CLOTHING – GOGGLES AND GLOVES!**
- **MAKE SURE NOTHING LIES ON THE SPLITTER, NOTHING BLOCKS IT, THERE IS NO POSSIBILITY OF SCREWING ANYTHING INTO THE MECHANISM!**
- **DO NOT WEAR LOOSE CLOTHES WHILE OPERATING THE SPLITTER.**
- Turn on the splitter by pressing the green button on switch **F**
- Place a wooden log into a **VERTICAL** position on the table in front of the wood pusher **H**
- Push with a wood pusher **H** towards the drill until the drill starts screwing into the wood, be very careful while doing it!
- Wait until a piece of wood splits completely and throw the pieces of split wood aside.
- If there are no objections concerning splitter operation, continue working.
- **HAVE A BREAK AT WORK EVERY 15 min** allowing time for the drill to cool down.



IF THE SPLITTER GETS BLOCKED IN A WOOD LOG, IMMEDIATELY TURN OFF THE MOTOR BY PRESSING THE RED BUTTON ON THE SWITCH AND APPLY THE PROCEDURE 8.1

NEVER TOUCH THE DRILL WHILE OPERATING AS IT MAY RESULT IN DIRECT BODY INJURIES!

DO NOT SCREW THE DRILL INTO KNAGS, THE DRILL MAY GET BLOCKED

PROCESS WET WOOD „FROM FOREST”

5.3. Finishing operating the splitter.

- Turn off the splitter by pressing a red button on the switch **F**
- **Cut the splitter from power supply by unplugging the socket**
- Clean the splitter to get rid of the rests of wood and dust
- Control the splitter condition, check for any damage that may impact safety of splitter operating.
- Store the splitter in a dry place



NEVER TOUCH THE DRILL AFTER FINISHING WORK< IT MAY RESULT IN BURNINGS

6. SPLITTER MAINTENANCE

6.1. V-belts adjustments.

To adjust the tension of the V-belts, you should:

- **Turn off the splitter and unplug it from the socket**
- Remove the pulley protection **M** by unscrewing its screws
- Loosen the screw of the indirect pulley **D**
- Loosen the motor mounting screwed onto the motor plate **O** with four screws
- Tighten the screw of the tensioner **K** of the indirect pulley **D**
- Check the tension of the upper V-belts – by pressing the V-belt in the middle part between the axis of the pulleys with the force of 10N. If the strip deflection is between 0.5cm and 1cm it means that the V-belt is tight.
- Tighten the screw of the indirect pulley **D** and move to tighten the bottom V-belts.
- Tighten the screws of the tensioner **N** tightening in this way the bottom V-belts.
- Check the tension of the bottom V-belts – by pressing the V-belt in the middle part between the axis of the pulleys with the force of 10N. If the strip deflection is between 0.5cm and 1cm it means that the V-belt is tight.
- Tighten the screws mounting the motor to the motor plate **D**
- Make manually several turns with bottom pulley **E** checking if everything is well adjusted

- Install the pulley protection **M** again by mounting it with screws which have been previously unscrewed
- Check visual effects of the activities performed if there are no damage resulting from this process



INCORRECT ADJUSTMENT OF V-BELTS TENSION IMPACTS THE MACHINE WORKING ORDER

V-BELTS REQUIRE ADJUSTING WHENEVER THERE IS A NEED (THE V-BELTS ARE SLIPPING ON THE PULLEYS)!

CONTROL THE CONDITION AND TENSION OF V-BELTS REGULARLY—EACH TIME BEFORE OPERATING THE MACHINE!

6.2. Drill exchange.

To exchange the drill, you should:

- **Turn off the splitter and unplug it from the socket**
- Remove the pulley protection **M** by unscrewing its screws
- Remove the spring **N** of drill protection **G** and move it back
- Block the pulleys **C**, **D** and **E**
- Unscrew the drill using the provided spanner for the first resistance and then it should be possible to unscrew the drill with hands (WEAR PROTECTIVE GLOVES)
- **Unscrew the drill anti-clockwise**
- Screw the new drill – screw it manually (WEAR PROTECTIVE GLOVES) until first resistance
- Release the lock on pulleys **C**, **D** and **E** and install again the pulley protection **M** by mounting it with screws which have been previously unscrewed
- Hook the spring **N** of the drill protection **G**
- Check visual effects of the activities performed if there are no damage resulting from this process



THE DRILL MUST BE ALWAYS CONTROLLED BEFORE AND AFTER OPERATING THE SPLITTER.

THE DRILL WEARS DOWN AND MUST BE REPLACED WHEN IT IS WORN DOWN – DO NOT WORK WITH A DAMAGED DRILL. IT MAY RESULT IN INJURIES OR SPLITTER’S DAMAGE.

A TWISTED, BROKEN OR INCORRECTLY WORKING DRILL MUST BE REPLACED WITH A NEW UNDAMAGED ONE, MANUFACTURED ESPECIALLY FOR THIS SPLITTER BY THE PRODUCER, SEE 9.1

AN INCORRECTLY WORKING DRILL MAY DAMAGE THE SPLITTER’S MECHANISM AND ITS MOTOR!

6.4. Daily maintenance.

In order to avoid a breakdown, after each use you should:

- Thoroughly clean up wood remains on the splitter
- Wipe the table and other components with a dry cloth (DO NOT USE WATER AND ITS SOLUTIONS FOR CLEANING THE SPLITTER)
- Visually check the condition of the splitter and its operation
- Check whether the cord or the plug are not damaged
- Check the condition of the V-belts
- Check the condition of the drill and check to what extent it is worn down.

7. LONG-TERM STORING

7.1 Storing the splitter

At the end of the season or when we do not plan to use the splitter for a longer time, the following activities are recommended:

- Unplug the splitter and roll up the cord with the plug
- Clean the splitter and store it in a way preventing dusting and humidity
- Store in a dry place.

7.2 Preparing the splitter after storing

To start operating the splitter after storing it, you should:

- Wipe the table and other components with a dry cloth (DO NOT USE WATER AND ITS SOLUTIONS FOR CLEANING THE SPLITTER)
- Visually check the condition of the splitter and its operation
- Check whether the cord or the plug are not damaged
- Check the condition of the V-belts
- Check the condition of the drill and check to what extent it is worn down

8. WHAT TO DO IN CASE OF PROBLEMS

8.1. When the drill gets blocked in the wood



WHEN THE DRILL GETS BLOCKED IN THE WOOD, IMMEDIATELY SWITCH OFF THE SPLITTER!

When the drill gets blocked in the wood, do the following:

- **Immediately turn off the splitter and unplug it from the socket**
- Remove the drill protection G
- Unscrew the drill out of the log with the provided spanner until you get it out from the wood completely
- Check the condition of the drill and check if the splitter has not been damaged.



NEVER HIT THE DRILL NOR TRY TO SPLIT THE BLOCKED WOODEN LOG ON THE SPLITTER'S BOARD. IT MAY RESULT IN SPLITTER'S DAMAGE OR THE DAMAGE OF THE WHOLE MACHINE AS WELL AS LOSING THE WARRANTY!

8.2. Typical problems

Most of the occurring breakdowns are minor and can be repaired easily. Before calling the service /producer, please consider the following hints presented in the table. These hints will enable a sequential control.

PROBLEM	CAUSE	SOLUTION
Splitter is not working	<ul style="list-style-type: none"> Was the power cord unplugged? Is the power cord undamaged ? Was the plug not damaged? 	<ul style="list-style-type: none"> Plug it into the socket If it is damaged, report it to the producer If it is damaged, report it to the producer
Splitter is working loudly	<ul style="list-style-type: none"> Are V-belts correctly tensioned? Was the drill not damaged? Was the protection not damaged? 	<ul style="list-style-type: none"> Tighten the belt according to 6.1 Replace the drill with a new one according to 6.2 Report the repair to the producer
Splitter is not splitting wood	<ul style="list-style-type: none"> Was the drill not damaged? Is the drill rotation correct? Are V-belts correctly tensioned? 	<ul style="list-style-type: none"> Replace the drill with a new one according to 6.2 Change the connection of the phases in the power socket (only qualified person – an electrician) Tighten the belt according to 6.1



IF THERE ARE ANY PROBLEMS OR QUESTIONS RESULTING FROM THE MISUNDERSTANDING OF THIS MANUAL OF OPERATION, PLEASE CONTACT THE PRODUCER.

9. SPECIFICATION

The data given in the table of contents serve only for reference purposes: any deviation may occur due to the use in different countries or regions and are based on best practical operations.

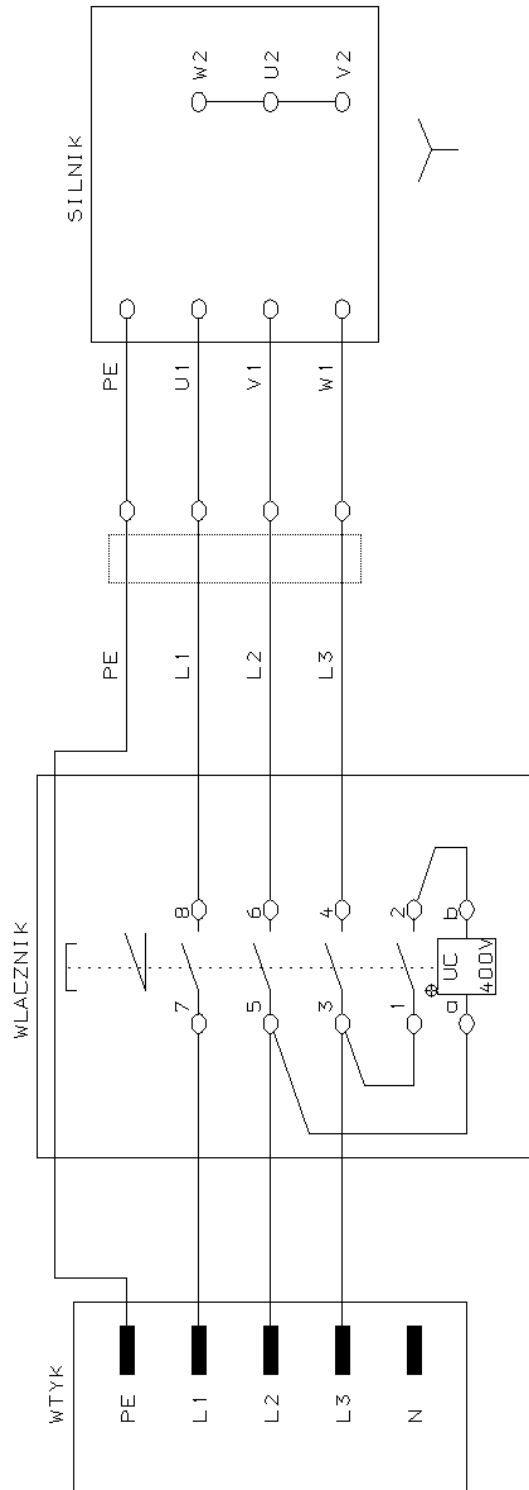
Product description	Screw splitter
Model	TMS - 2 ; 3kW
Nominal voltage	3~400V
Nominal frequency	50Hz
Nominal power	3 kW
Seize (width. x height x length.) /mm	365 x 574 x 727
Weight	45,5 Kg
Maximum seize of the log (diameter x height) / mm	300 x 400

This device is not designed for people with reduced physical, sensory or mental capabilities, characterized by a lack of experience or knowledge, unless they remain under the supervision of the person responsible for their safety or receive from them guidelines how to use the device! **Children and people under the influence of alcohol or other intoxicants cannot use the splitter!**

9.1. Spare parts

No.	Name of the spare parts
1.	DRILL 77 R 300 – 600 rotations/min
2.	Upper V-belt AVX10x528 La
3.	Bottom V-belt AVX10x550 La

9.2. Electrical diagram



10. ENVIRONMENT PROTECTION, WASTE MANAGEMENT ACT

Waste electrical equipment cannot be disposed together with household waste. Please return the equipment for recycling at the designated point of collection. Please contact the competent local authorities or seller in that issue.	
---	--

11. TERMS OF WARRANTY

- The defects resulting from incorrect production or defects of material are only subject to warranty. The warranty period was fixed for 12 months from the date of purchase. The basis for the claim is proof of purchase of the set and the delivery of the splitter to the producer.
- **The drill is not covered by warranty** as the drill is a normal part that gets worn down.
- The complaint will not be considered if an improper use is found, lack of splitter's maintenance and other mechanical damage not resulting from normal operation.
- The splitter loses the warranty if any changes have been implemented to the device – including sharpening the drill or when different spare parts were used than those provided by the producer.

Serial number:

Seller	Date of sale

TECHMET A.M.M.Z. Juzwa Sp.j.
ul. Mała 10
62-200 Gniezno
tel. / fax +48 61 428 24 18
biuro@techmet.pl / www.techmet.pl

12. NOTES: